

IN THE DISTRICT COURT OF THE FIFTH JUDICIAL DISTRICT OF THE  
STATE OF IDAHO, IN AND FOR THE COUNTY OF TWIN FALLS

In Re CSRBA ) PARTIAL DECREE PURSUANT TO I.R.C.P. 54(b)  
Case No. 49576 ) FOR FEDERAL RESERVED  
 )  
 ) WATER RIGHT NO. 94-09531A

---

NAME AND ADDRESS: UNITED STATES OF AMERICA ACTING THROUGH  
USDA FOREST SERVICE  
550 W FORT ST MSC 033  
BOISE ID 83724

SOURCE: See Attachment 1, Column A TRIBUTARY: See Attachment 1, Column B

Sources are located on National Forest System Land in the Graham Creek-Lower North Fork Coeur d'Alene River subwatershed (HUC12 170103010702).

QUANTITY: The amount of water necessary to control and suppress forest fires.

PRIORITY DATE: 11/06/1906

POINT OF DIVERSION: See Attachment 1, Columns C through G

PURPOSE AND PERIOD OF USE: 

<u>PURPOSE OF USE</u>	<u>PERIOD OF USE</u>
Administrative-Fire Suppression	01/01 - 12/31

PLACE OF USE: National Forests in Idaho and the Kaniksu, Lolo and Kootenai National Forests in Montana.

See Attachment 2.

OTHER PROVISIONS NECESSARY FOR DEFINITION OR ADMINISTRATION OF THIS WATER RIGHT:

This right is limited to the intermittent diversion and use of water for the purpose of suppressing wildfires. This water right shall not be used as a basis to prevent the future appropriation of water.

This partial decree is subject to such general provisions necessary for the definition of the rights or for the efficient administration of the water rights as may be ultimately determined by the Court at a point in time no later than the entry of a final unified decree. Idaho Code § 42-1412(6).

RULE 54(b) CERTIFICATE

With respect to the issues determined by the above partial judgment it is hereby CERTIFIED, in accordance with Rule 54(b), I.R.C.P., that the court has determined that there is no just reason for delay of the entry of a final judgment and that the court has and does hereby direct that the above partial judgment is a final judgment upon which execution may issue and an appeal may be taken as provided by the Idaho Appellate Rules.

---

Eric J. Wildman  
Presiding Judge of the  
Coeur d'Alene-Spokane River Adjudication

# Attachment 1

	A	B	C	D	E	F	G
001	SOURCE NAME	TO TRIBUTARY	TOWNSHIP	RANGE	SECTION	QQ	SURVEY CODE AND NUMBER
002	Cedar Creek	North Fork Coeur d'Alene River	49N	03E	01		
003	Lansdale Creek	Cedar Creek	49N	03E	01		
004	Unnamed Stream	Beaver Creek	49N	03E	01		
005	Unnamed Stream	Beaver Creek	49N	03E	01		
006	Unnamed Stream	Cedar Creek	49N	03E	01		
007	Unnamed Stream	Cedar Creek	49N	03E	01		
008	Unnamed Stream	Cedar Creek	49N	03E	01		
009	Unnamed Stream	Cedar Creek	49N	03E	01		
010	Cedar Creek	North Fork Coeur d'Alene River	49N	03E	02		
011	Unnamed Stream	Cedar Creek	49N	03E	02		
012	Unnamed Stream	Cedar Creek	49N	03E	02		
013	Unnamed Stream	Cedar Creek	49N	03E	02		
014	Unnamed Stream	Cedar Creek	49N	03E	02		
015	Unnamed Stream	Cedar Creek	49N	03E	03		
016	Unnamed Stream	Graham Creek	49N	03E	03		
017	Unnamed Stream	Graham Creek	49N	03E	03		
018	Unnamed Stream	Graham Creek	49N	03E	03		
019	Unnamed Stream	Graham Creek	49N	03E	04	NESE	
020	Unnamed Stream	Graham Creek	49N	03E	04	NWNE	L 2
021	Unnamed Stream	Graham Creek	49N	03E	04	NWSE	
022	Unnamed Stream	Graham Creek	49N	03E	04	SENE	
023	Unnamed Stream	Graham Creek	49N	03E	04	SENE	
024	Unnamed Stream	Graham Creek	49N	03E	04	SESE	
025	Unnamed Stream	Graham Creek	49N	03E	04	SESE	
026	Unnamed Stream	Graham Creek	49N	03E	04	SWNE	
027	Unnamed Stream	Graham Creek	49N	03E	04	SWNE	
028	Unnamed Stream	Graham Creek	49N	03E	04	SWSE	
029	Unnamed Stream	Graham Creek	49N	03E	05		
030	Unnamed Stream	Graham Creek	49N	03E	05		
031	Unnamed Stream	Graham Creek	49N	03E	05		
032	Unnamed Stream	Graham Creek	49N	03E	05		
033	Unnamed Stream	Graham Creek	49N	03E	05		
034	Coal Creek	North Fork Coeur d'Alene River	49N	03E	06		
035	Unnamed Stream	Coal Creek	49N	03E	06		
036	Coal Creek	North Fork Coeur d'Alene River	49N	03E	07		
037	Graham Creek	North Fork Coeur d'Alene River	49N	03E	07		
038	Unnamed Stream	Coal Creek	49N	03E	07		

# Attachment 1

	A	B	C	D	E	F	G
001	SOURCE NAME	TO TRIBUTARY	TOWNSHIP	RANGE	SECTION	QQ	SURVEY CODE AND NUMBER
039	Graham Creek	North Fork Coeur d'Alene River	49N	03E	08		
040	Unnamed Stream	Graham Creek	49N	03E	08		
041	Unnamed Stream	Graham Creek	49N	03E	08		
042	Unnamed Stream	Graham Creek	49N	03E	08		
043	Unnamed Stream	Graham Creek	49N	03E	08		
044	East Fork Graham Creek	Graham Creek	49N	03E	09		
045	Graham Creek	North Fork Coeur d'Alene River	49N	03E	09		
046	Unnamed Stream	East Fork Graham Creek	49N	03E	09		
047	Unnamed Stream	East Fork Graham Creek	49N	03E	09		
048	Unnamed Stream	East Fork Graham Creek	49N	03E	09		
049	Unnamed Stream	Graham Creek	49N	03E	09		
050	Unnamed Stream	Graham Creek	49N	03E	09		
051	Cedar Creek	North Fork Coeur d'Alene River	49N	03E	10		
052	East Fork Graham Creek	Graham Creek	49N	03E	10		
053	Unnamed Stream	Cedar Creek	49N	03E	10		
054	Unnamed Stream	Cedar Creek	49N	03E	10		
055	Unnamed Stream	East Fork Graham Creek	49N	03E	10		
056	Unnamed Stream	East Fork Graham Creek	49N	03E	10		
057	Unnamed Stream	Graham Creek	49N	03E	10		
058	Cedar Creek	North Fork Coeur d'Alene River	49N	03E	11		
059	Unnamed Stream	Cedar Creek	49N	03E	11		
060	Unnamed Stream	Cedar Creek	49N	03E	11		
061	Unnamed Stream	Cedar Creek	49N	03E	11		
062	Lansdale Creek	Cedar Creek	49N	03E	12		
063	Unnamed Stream	Beaver Creek	49N	03E	12		
064	Unnamed Stream	Beaver Creek	49N	03E	12		
065	Unnamed Stream	Cedar Creek	49N	03E	12		
066	Unnamed Stream	Graham Creek	49N	03E	16		
067	Unnamed Stream	Graham Creek	49N	03E	17		
068	Unnamed Stream	Graham Creek	49N	03E	17		
069	Unnamed Stream	Beaver Creek	49N	04E	06		
070	Unnamed Stream	Beaver Creek	49N	04E	07		
071	Unnamed Stream	Pablo Creek	50N	02E	24	NESE	
072	Unnamed Stream	Pablo Creek	50N	02E	24	NESE	
073	Scott Creek	North Fork Coeur d'Alene River	50N	02E	24	NWNE	
074	Unnamed Stream	Pablo Creek	50N	02E	24	NWSE	
075	North Fork Coeur d'Alene River	Coeur d'Alene River	50N	02E	25		

# Attachment 1

	A	B	C	D	E	F	G
001	SOURCE NAME	TO TRIBUTARY	TOWNSHIP	RANGE	SECTION	QQ	SURVEY CODE AND NUMBER
076	Unnamed Stream	North Fork Coeur d'Alene River	50N	02E	25		
077	Unnamed Stream	North Fork Coeur d'Alene River	50N	02E	25		
078	Unnamed Stream	North Fork Coeur d'Alene River	50N	02E	25		
079	Unnamed Stream	North Fork Coeur d'Alene River	50N	02E	25		
080	Unnamed Stream	North Fork Coeur d'Alene River	50N	02E	25		
081	Unnamed Stream	Brown Creek	50N	03E	01		
082	Brown Creek	East Fork Charlie Creek	50N	03E	02	NENW	L 3
083	Unnamed Stream	Brown Creek	50N	03E	02	NESE	
084	Unnamed Stream	Brown Creek	50N	03E	02	NWSE	
085	Unnamed Stream	Brown Creek	50N	03E	02	NWSE	
086	Unnamed Stream	Brown Creek	50N	03E	02	SENE	
087	Brown Creek	East Fork Charlie Creek	50N	03E	02	SENE	
088	Unnamed Stream	Brown Creek	50N	03E	02	SENE	
089	Unnamed Stream	Brown Creek	50N	03E	02	SESE	
090	Unnamed Stream	Brown Creek	50N	03E	02	SWNE	
091	Unnamed Stream	Brown Creek	50N	03E	02	SWNE	
092	Dewey Creek	Grizzly Creek	50N	03E	03		
093	Unnamed Stream	Brown Creek	50N	03E	03		
094	Unnamed Stream	Dewey Creek	50N	03E	03		
095	Dewey Creek	Grizzly Creek	50N	03E	04		
096	Lindsey Creek	Grizzly Creek	50N	03E	04		
097	Unnamed Stream	Dewey Creek	50N	03E	04		
098	Unnamed Stream	Dewey Creek	50N	03E	04		
099	Lindsey Creek	Grizzly Creek	50N	03E	05		
100	Grizzly Creek	North Fork Coeur d'Alene River	50N	03E	08		
101	Unnamed Stream	Grizzly Creek	50N	03E	08		
102	Unnamed Stream	Grizzly Creek	50N	03E	08		
103	Lindsey Creek	Grizzly Creek	50N	03E	09		
104	Unnamed Stream	Dewey Creek	50N	03E	09		
105	Unnamed Stream	Dewey Creek	50N	03E	09		
106	Unnamed Stream	Dewey Creek	50N	03E	09		
107	Unnamed Stream	Dewey Creek	50N	03E	09		
108	Unnamed Stream	Grizzly Creek	50N	03E	09		
109	Dewey Creek	Grizzly Creek	50N	03E	10		
110	Unnamed Stream	Brown Creek	50N	03E	10		
111	Unnamed Stream	Brown Creek	50N	03E	10		
112	Unnamed Stream	Brown Creek	50N	03E	10		

# Attachment 1

	A	B	C	D	E	F	G
001	SOURCE NAME	TO TRIBUTARY	TOWNSHIP	RANGE	SECTION	QQ	SURVEY CODE AND NUMBER
113	Unnamed Stream	Dewey Creek	50N	03E	10		
114	Unnamed Stream	Dewey Creek	50N	03E	10		
115	Unnamed Stream	Dewey Creek	50N	03E	10		
116	Unnamed Stream	Brown Creek	50N	03E	11	NENE	
117	Unnamed Stream	Brown Creek	50N	03E	11	NESE	
118	Brown Creek	East Fork Charlie Creek	50N	03E	11	NESW	
119	Unnamed Stream	Brown Creek	50N	03E	11	NESW	
120	Unnamed Stream	Brown Creek	50N	03E	11	NWNE	
121	Unnamed Stream	Brown Creek	50N	03E	11	NWSE	
122	Unnamed Stream	Brown Creek	50N	03E	11	SENE	
123	Unnamed Stream	Brown Creek	50N	03E	11	SESE	
124	Brown Creek	East Fork Charlie Creek	50N	03E	11	SESW	
125	Unnamed Stream	Brown Creek	50N	03E	11	SESW	
126	Unnamed Stream	Brown Creek	50N	03E	11	SESW	
127	Unnamed Stream	Brown Creek	50N	03E	11	SWNE	
128	Unnamed Stream	Brown Creek	50N	03E	11	SWSE	
129	Unnamed Stream	Brown Creek	50N	03E	11	SWSW	
130	Hart Creek	Brown Creek	50N	03E	12		
131	Rookie Creek	Brown Creek	50N	03E	12		
132	Unnamed Stream	Brown Creek	50N	03E	12		
133	Hart Creek	Brown Creek	50N	03E	13		
134	Hopkins Creek	North Fork Coeur d'Alene River	50N	03E	13		
135	Rookie Creek	Brown Creek	50N	03E	13		
136	Unnamed Stream	Hopkins Creek	50N	03E	13		
137	Hart Creek	Brown Creek	50N	03E	14	NESE	
138	Brown Creek	East Fork Charlie Creek	50N	03E	14	NWSE	
139	Hart Creek	Brown Creek	50N	03E	14	NWSE	
140	Unnamed Stream	Little Grizzly Creek	50N	03E	14	NWSW	
141	Hart Creek	Brown Creek	50N	03E	14	SENE	
142	Unnamed Stream	Brown Creek	50N	03E	14	SENE	
143	Brown Creek	East Fork Charlie Creek	50N	03E	14	SENW	
144	Unnamed Stream	Brown Creek	50N	03E	14	SENW	
145	Brown Creek	East Fork Charlie Creek	50N	03E	14	SWSE	
146	Unnamed Stream	Little Grizzly Creek	50N	03E	14	SWSW	
147	Dewey Creek	Grizzly Creek	50N	03E	15		
148	Little Grizzly Creek	North Fork Coeur d'Alene River	50N	03E	15		
149	Unnamed Stream	Dewey Creek	50N	03E	15		

# Attachment 1

	A	B	C	D	E	F	G
001	SOURCE NAME	TO TRIBUTARY	TOWNSHIP	RANGE	SECTION	QQ	SURVEY CODE AND NUMBER
150	Unnamed Stream	Dewey Creek	50N	03E	15		
151	Unnamed Stream	Dewey Creek	50N	03E	15		
152	Unnamed Stream	Dewey Creek	50N	03E	15		
153	Unnamed Stream	Little Grizzly Creek	50N	03E	15		
154	Unnamed Stream	Little Grizzly Creek	50N	03E	15		
155	Grizzly Creek	North Fork Coeur d'Alene River	50N	03E	16		
156	Lindsey Creek	Grizzly Creek	50N	03E	16		
157	Unnamed Stream	Dewey Creek	50N	03E	16		
158	Unnamed Stream	Dewey Creek	50N	03E	16		
159	Unnamed Stream	Dewey Creek	50N	03E	16		
160	Unnamed Stream	Grizzly Creek	50N	03E	16		
161	Unnamed Stream	Lindsey Creek	50N	03E	16		
162	Grizzly Creek	North Fork Coeur d'Alene River	50N	03E	17		
163	Silver Creek	North Fork Coeur d'Alene River	50N	03E	17		
164	Unnamed Stream	Grizzly Creek	50N	03E	17		
165	Unnamed Stream	Grizzly Creek	50N	03E	17		
166	Unnamed Stream	Grizzly Creek	50N	03E	17		
167	Unnamed Stream	Scott Creek	50N	03E	17		
168	Unnamed Stream	Scott Creek	50N	03E	17		
169	Unnamed Stream	Scott Creek	50N	03E	17		
170	Scott Creek	North Fork Coeur d'Alene River	50N	03E	18		
171	Unnamed Stream	Scott Creek	50N	03E	18		
172	Unnamed Stream	Scott Creek	50N	03E	18		
173	Unnamed Stream	Scott Creek	50N	03E	18		
174	Unnamed Stream	Scott Creek	50N	03E	18		
175	Unnamed Stream	Scott Creek	50N	03E	18		
176	Tent Creek	North Fork Coeur d'Alene River	50N	03E	19	NESE	
177	Pablo Creek	North Fork Coeur d'Alene River	50N	03E	19	NESW	
178	Tent Creek	North Fork Coeur d'Alene River	50N	03E	19	SENE	
179	Tent Creek	North Fork Coeur d'Alene River	50N	03E	19	SESE	
180	Pablo Creek	North Fork Coeur d'Alene River	50N	03E	19	SWNE	
181	Unnamed Stream	Pablo Creek	50N	03E	19	SWSE	
182	Pablo Creek	North Fork Coeur d'Alene River	50N	03E	19	SWSW	L 4
183	Unnamed Stream	Pablo Creek	50N	03E	19	SWSW	L 4
184	Silver Creek	North Fork Coeur d'Alene River	50N	03E	20		
185	Tent Creek	North Fork Coeur d'Alene River	50N	03E	20		
186	Unnamed Stream	Silver Creek	50N	03E	20		

# Attachment 1

	A	B	C	D	E	F	G
001	SOURCE NAME	TO TRIBUTARY	TOWNSHIP	RANGE	SECTION	QQ	SURVEY CODE AND NUMBER
187	Unnamed Stream	Silver Creek	50N	03E	20		
188	Unnamed Stream	Silver Creek	50N	03E	20		
189	Unnamed Stream	Silver Creek	50N	03E	20		
190	Unnamed Stream	Tent Creek	50N	03E	20		
191	Dewey Creek	Grizzly Creek	50N	03E	21		
192	Grizzly Creek	North Fork Coeur d'Alene River	50N	03E	21		
193	Unnamed Stream	Dewey Creek	50N	03E	21		
194	Unnamed Stream	Grizzly Creek	50N	03E	21		
195	Unnamed Stream	North Fork Coeur d'Alene River	50N	03E	21		
196	Unnamed Stream	North Fork Coeur d'Alene River	50N	03E	21		
197	Unnamed Stream	North Fork Coeur d'Alene River	50N	03E	21		
198	Unnamed Stream	Silver Creek	50N	03E	21		
199	Dewey Creek	Grizzly Creek	50N	03E	22		
200	Grizzly Creek	North Fork Coeur d'Alene River	50N	03E	22		
201	Little Grizzly Creek	North Fork Coeur d'Alene River	50N	03E	22		
202	North Fork Coeur d'Alene River	Coeur d'Alene River	50N	03E	22		
203	Unnamed Stream	Dewey Creek	50N	03E	22		
204	Unnamed Stream	Little Grizzly Creek	50N	03E	22		
205	Brown Creek	East Fork Charlie Creek	50N	03E	23		
206	North Fork Coeur d'Alene River	Coeur d'Alene River	50N	03E	23		
207	Rookie Creek	Brown Creek	50N	03E	23		
208	Hopkins Creek	North Fork Coeur d'Alene River	50N	03E	24		
209	Rookie Creek	Brown Creek	50N	03E	24		
210	Unnamed Stream	Hopkins Creek	50N	03E	24		
211	Unnamed Stream	Hopkins Creek	50N	03E	24		
212	Unnamed Stream	Hopkins Creek	50N	03E	24		
213	Unnamed Stream	Hopkins Creek	50N	03E	25	NENE	
214	Unnamed Stream	Hopkins Creek	50N	03E	25	NENE	
215	Unnamed Stream	Hopkins Creek	50N	03E	25	NENE	
216	Hopkins Creek	North Fork Coeur d'Alene River	50N	03E	25	NENW	
217	Unnamed Stream	Hopkins Creek	50N	03E	25	NENW	
218	Hopkins Creek	North Fork Coeur d'Alene River	50N	03E	25	NESW	
219	Hopkins Creek	North Fork Coeur d'Alene River	50N	03E	25	NWNE	
220	Hopkins Creek	North Fork Coeur d'Alene River	50N	03E	25	SENE	
221	Cedar Creek	North Fork Coeur d'Alene River	50N	03E	25	SESE	L 9
222	North Fork Coeur d'Alene River	Coeur d'Alene River	50N	03E	25	SESE	
223	North Fork Coeur d'Alene River	Coeur d'Alene River	50N	03E	25	SESE	L 9

# Attachment 1

	A	B	C	D	E	F	G
001	SOURCE NAME	TO TRIBUTARY	TOWNSHIP	RANGE	SECTION	QQ	SURVEY CODE AND NUMBER
224	Hopkins Creek	North Fork Coeur d'Alene River	50N	03E	25	SESW	
225	Hopkins Creek	North Fork Coeur d'Alene River	50N	03E	25	SESW	L 11
226	North Fork Coeur d'Alene River	Coeur d'Alene River	50N	03E	25	SESW	
227	Hopkins Creek	North Fork Coeur d'Alene River	50N	03E	25	SWNE	
228	Unnamed Stream	North Fork Coeur d'Alene River	50N	03E	25	SWSE	
229	Unnamed Stream	North Fork Coeur d'Alene River	50N	03E	25	SWSE	L 7
230	Hopkins Creek	North Fork Coeur d'Alene River	50N	03E	25	SWSW	
231	North Fork Coeur d'Alene River	Coeur d'Alene River	50N	03E	25	SWSW	
232	North Fork Coeur d'Alene River	Coeur d'Alene River	50N	03E	26	NENE	
233	North Fork Coeur d'Alene River	Coeur d'Alene River	50N	03E	26	NENE	L 2
234	North Fork Coeur d'Alene River	Coeur d'Alene River	50N	03E	26	NESE	
235	North Fork Coeur d'Alene River	Coeur d'Alene River	50N	03E	26	NESE	L 6
236	Unnamed Stream	North Fork Coeur d'Alene River	50N	03E	26	NESE	L 6
237	Unnamed Stream	North Fork Coeur d'Alene River	50N	03E	26	NESW	
238	Unnamed Stream	North Fork Coeur d'Alene River	50N	03E	26	NWSE	
239	Unnamed Stream	North Fork Coeur d'Alene River	50N	03E	26	NWSE	
240	Cinnabar Creek	North Fork Coeur d'Alene River	50N	03E	26	NWSW	
241	North Fork Coeur d'Alene River	Coeur d'Alene River	50N	03E	26	SENE	
242	North Fork Coeur d'Alene River	Coeur d'Alene River	50N	03E	26	SENE	L 3
243	Unnamed Stream	North Fork Coeur d'Alene River	50N	03E	26	SENE	
244	Unnamed Stream	North Fork Coeur d'Alene River	50N	03E	26	SENE	L 3
245	Unnamed Stream	North Fork Coeur d'Alene River	50N	03E	26	SENE	L 3
246	North Fork Coeur d'Alene River	Coeur d'Alene River	50N	03E	26	SESE	
247	North Fork Coeur d'Alene River	Coeur d'Alene River	50N	03E	26	SESE	L 7
248	North Fork Coeur d'Alene River	Coeur d'Alene River	50N	03E	26	SESE	L 8
249	Unnamed Stream	North Fork Coeur d'Alene River	50N	03E	26	SESE	
250	Unnamed Stream	North Fork Coeur d'Alene River	50N	03E	26	SESE	L 7
251	Cinnabar Creek	North Fork Coeur d'Alene River	50N	03E	26	SESW	
252	Unnamed Stream	North Fork Coeur d'Alene River	50N	03E	26	SWNE	
253	Cinnabar Creek	North Fork Coeur d'Alene River	50N	03E	26	SWNW	
254	Unnamed Stream	North Fork Coeur d'Alene River	50N	03E	26	SWSE	
255	Cinnabar Creek	North Fork Coeur d'Alene River	50N	03E	26	SWSW	
256	Unnamed Stream	North Fork Coeur d'Alene River	50N	03E	28	NENE	
257	Unnamed Stream	North Fork Coeur d'Alene River	50N	03E	28	NENW	
258	Unnamed Stream	North Fork Coeur d'Alene River	50N	03E	28	NENW	
259	Unnamed Stream	North Fork Coeur d'Alene River	50N	03E	28	NENW	
260	North Fork Coeur d'Alene River	Coeur d'Alene River	50N	03E	28	NESE	



# Attachment 1

	A	B	C	D	E	F	G
001	SOURCE NAME	TO TRIBUTARY	TOWNSHIP	RANGE	SECTION	QQ	SURVEY CODE AND NUMBER
261	North Fork Coeur d'Alene River	Coeur d'Alene River	50N	03E	28	NESE	L 8
262	North Fork Coeur d'Alene River	Coeur d'Alene River	50N	03E	28	NWSE	
263	Unnamed Stream	North Fork Coeur d'Alene River	50N	03E	28	NWSE	
264	Unnamed Stream	North Fork Coeur d'Alene River	50N	03E	28	NWSE	L 7
265	Unnamed Stream	Graham Creek	50N	03E	28	SESW	
266	North Fork Coeur d'Alene River	Coeur d'Alene River	50N	03E	28	SWNE	
267	North Fork Coeur d'Alene River	Coeur d'Alene River	50N	03E	28	SWNW	
268	North Fork Coeur d'Alene River	Coeur d'Alene River	50N	03E	28	SWNW	L 10
269	Unnamed Stream	North Fork Coeur d'Alene River	50N	03E	28	SWNW	
270	Unnamed Stream	North Fork Coeur d'Alene River	50N	03E	28	SWSE	
271	Silver Creek	North Fork Coeur d'Alene River	50N	03E	29	NENE	
272	North Fork Coeur d'Alene River	Coeur d'Alene River	50N	03E	29	NESE	
273	North Fork Coeur d'Alene River	Coeur d'Alene River	50N	03E	29	NESE	L 1
274	Silver Creek	North Fork Coeur d'Alene River	50N	03E	29	NESE	L 1
275	Silver Creek	North Fork Coeur d'Alene River	50N	03E	29	NWNE	
276	Unnamed Stream	North Fork Coeur d'Alene River	50N	03E	29	NWNW	
277	Unnamed Stream	Tent Creek	50N	03E	29	NWNW	
278	North Fork Coeur d'Alene River	Coeur d'Alene River	50N	03E	29	NWSE	
279	North Fork Coeur d'Alene River	Coeur d'Alene River	50N	03E	29	NWSE	L 4
280	Unnamed Stream	North Fork Coeur d'Alene River	50N	03E	29	NWSW	
281	North Fork Coeur d'Alene River	Coeur d'Alene River	50N	03E	29	SENE	
282	North Fork Coeur d'Alene River	Coeur d'Alene River	50N	03E	29	SENE	L 1
283	Silver Creek	North Fork Coeur d'Alene River	50N	03E	29	SENE	L 1
284	North Fork Coeur d'Alene River	Coeur d'Alene River	50N	03E	29	SESW	
285	North Fork Coeur d'Alene River	Coeur d'Alene River	50N	03E	29	SESW	L 6
286	Unnamed Stream	North Fork Coeur d'Alene River	50N	03E	29	SWNW	
287	North Fork Coeur d'Alene River	Coeur d'Alene River	50N	03E	29	SWSE	
288	North Fork Coeur d'Alene River	Coeur d'Alene River	50N	03E	29	SWSE	L 4
289	North Fork Coeur d'Alene River	Coeur d'Alene River	50N	03E	29	SWSW	
290	North Fork Coeur d'Alene River	Coeur d'Alene River	50N	03E	29	SWSW	L 8
291	Unnamed Stream	North Fork Coeur d'Alene River	50N	03E	29	SWSW	
292	Unnamed Stream	North Fork Coeur d'Alene River	50N	03E	29	SWSW	L 8
293	Tent Creek	North Fork Coeur d'Alene River	50N	03E	30	NENE	
294	Unnamed Stream	Tent Creek	50N	03E	30	NENE	
295	Pablo Creek	North Fork Coeur d'Alene River	50N	03E	30	NWNW	L 15
296	Unnamed Stream	Pablo Creek	50N	03E	30	NWNW	L 15
297	Unnamed Stream	North Fork Coeur d'Alene River	50N	03E	30	NWSW	L 11

# Attachment 1




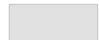

	A	B	C	D	E	F	G
001	SOURCE NAME	TO TRIBUTARY	TOWNSHIP	RANGE	SECTION	QQ	SURVEY CODE AND NUMBER
298	North Fork Coeur d'Alene River	Coeur d'Alene River	50N	03E	30	SENE	L 7
299	Tent Creek	North Fork Coeur d'Alene River	50N	03E	30	SENE	L 7
300	Coal Creek	North Fork Coeur d'Alene River	50N	03E	30	SESE	
301	Coal Creek	North Fork Coeur d'Alene River	50N	03E	30	SESE	L 13
302	North Fork Coeur d'Alene River	Coeur d'Alene River	50N	03E	30	SESE	
303	North Fork Coeur d'Alene River	Coeur d'Alene River	50N	03E	30	SESE	L 13
304	Coal Creek	North Fork Coeur d'Alene River	50N	03E	30	SESW	
305	North Fork Coeur d'Alene River	Coeur d'Alene River	50N	03E	30	SWNW	
306	North Fork Coeur d'Alene River	Coeur d'Alene River	50N	03E	30	SWNW	L 4
307	Unnamed Stream	North Fork Coeur d'Alene River	50N	03E	30	SWNW	
308	Unnamed Stream	North Fork Coeur d'Alene River	50N	03E	30	SWNW	L 4
309	Unnamed Stream	North Fork Coeur d'Alene River	50N	03E	30	SWNW	
310	Unnamed Stream	North Fork Coeur d'Alene River	50N	03E	30	SWNW	L 4
311	Unnamed Stream	North Fork Coeur d'Alene River	50N	03E	30	SWSW	L 12
312	Coal Creek	North Fork Coeur d'Alene River	50N	03E	31		
313	Unnamed Stream	Coal Creek	50N	03E	31		
314	Unnamed Stream	Coal Creek	50N	03E	31		
315	Unnamed Stream	North Fork Coeur d'Alene River	50N	03E	31		
316	Unnamed Stream	North Fork Coeur d'Alene River	50N	03E	32	NWNW	
317	Unnamed Stream	North Fork Coeur d'Alene River	50N	03E	32	NWSW	
318	Unnamed Stream	Graham Creek	50N	03E	32	SESW	
319	Unnamed Stream	Graham Creek	50N	03E	32	SWNE	
320	Unnamed Stream	North Fork Coeur d'Alene River	50N	03E	32	SWNW	
321	Unnamed Stream	Graham Creek	50N	03E	32	SWSE	
322	Unnamed Stream	North Fork Coeur d'Alene River	50N	03E	32	SWSW	
323	Unnamed Stream	Cinnabar Creek	50N	03E	34		
324	Unnamed Stream	Graham Creek	50N	03E	34		
325	Unnamed Stream	North Fork Coeur d'Alene River	50N	03E	34		
326	Unnamed Stream	North Fork Coeur d'Alene River	50N	03E	34		
327	Cedar Creek	North Fork Coeur d'Alene River	50N	03E	36		
328	Lansdale Creek	Cedar Creek	50N	03E	36		
329	Unnamed Stream	Cedar Creek	50N	03E	36		
330	Unnamed Stream	North Fork Coeur d'Alene River	50N	03E	36		
331	Unnamed Stream	North Fork Coeur d'Alene River	50N	03E	36		
332	Unnamed Stream	North Fork Coeur d'Alene River	50N	03E	36		
333	Unnamed Stream	North Fork Coeur d'Alene River	50N	03E	36		
334	Unnamed Stream	North Fork Coeur d'Alene River	50N	03E	36		

# Attachment 1

	A	B	C	D	E	F	G
001	SOURCE NAME	TO TRIBUTARY	TOWNSHIP	RANGE	SECTION	QQ	SURVEY CODE AND NUMBER
335	Hopkins Creek	North Fork Coeur d'Alene River	50N	04E	18		
336	Unnamed Stream	Hopkins Creek	50N	04E	19		
337	Unnamed Stream	North Fork Coeur d'Alene River	50N	04E	19		
338	Unnamed Stream	North Fork Coeur d'Alene River	50N	04E	19		
339	Unnamed Stream	North Fork Coeur d'Alene River	50N	04E	19		
340	Unnamed Stream	North Fork Coeur d'Alene River	50N	04E	20		
341	North Fork Coeur d'Alene River	Coeur d'Alene River	50N	04E	29		
342	Unnamed Stream	North Fork Coeur d'Alene River	50N	04E	29		
343	North Fork Coeur d'Alene River	Coeur d'Alene River	50N	04E	30		
344	Unnamed Stream	Hopkins Creek	50N	04E	30		
345	Unnamed Stream	Hopkins Creek	50N	04E	30		
346	Unnamed Stream	North Fork Coeur d'Alene River	50N	04E	30		
347	Unnamed Stream	North Fork Coeur d'Alene River	50N	04E	30		
348	Unnamed Stream	North Fork Coeur d'Alene River	50N	04E	30		
349	Unnamed Stream	North Fork Coeur d'Alene River	50N	04E	30		
350	Unnamed Stream	North Fork Coeur d'Alene River	50N	04E	30		
351	North Fork Coeur d'Alene River	Coeur d'Alene River	50N	04E	31		
352	Unnamed Stream	Beaver Creek	50N	04E	31		
353	Unnamed Stream	North Fork Coeur d'Alene River	50N	04E	31		
354	Unnamed Stream	North Fork Coeur d'Alene River	50N	04E	31		
355	Unnamed Stream	North Fork Coeur d'Alene River	50N	04E	31		
356	Unnamed Stream	North Fork Coeur d'Alene River	50N	04E	31		
357	Beaver Creek	North Fork Coeur d'Alene River	50N	04E	32		
358	North Fork Coeur d'Alene River	Coeur d'Alene River	50N	04E	32		
359	Unnamed Stream	Beaver Creek	50N	04E	32		
360	Unnamed Stream	North Fork Coeur d'Alene River	50N	04E	32		
361	Brown Creek	East Fork Charlie Creek	51N	03E	35		
362	Unnamed Pond	Hopkins Creek	50N	04E	30		

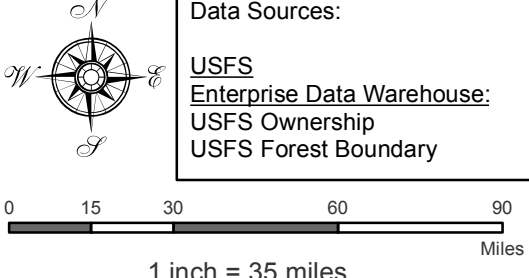
Attachment 2  
 Place of Use Map Fire Suppression - Water Right No. 94-09531A  
 National Forests in Idaho and the Kaniksu, Lolo and Kootenai NF in Montana

Key to Features

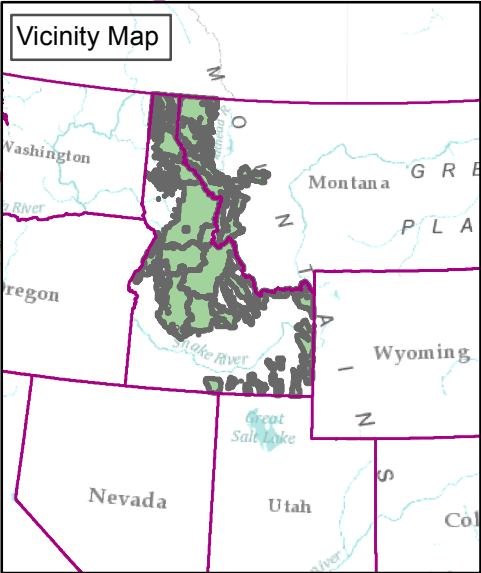
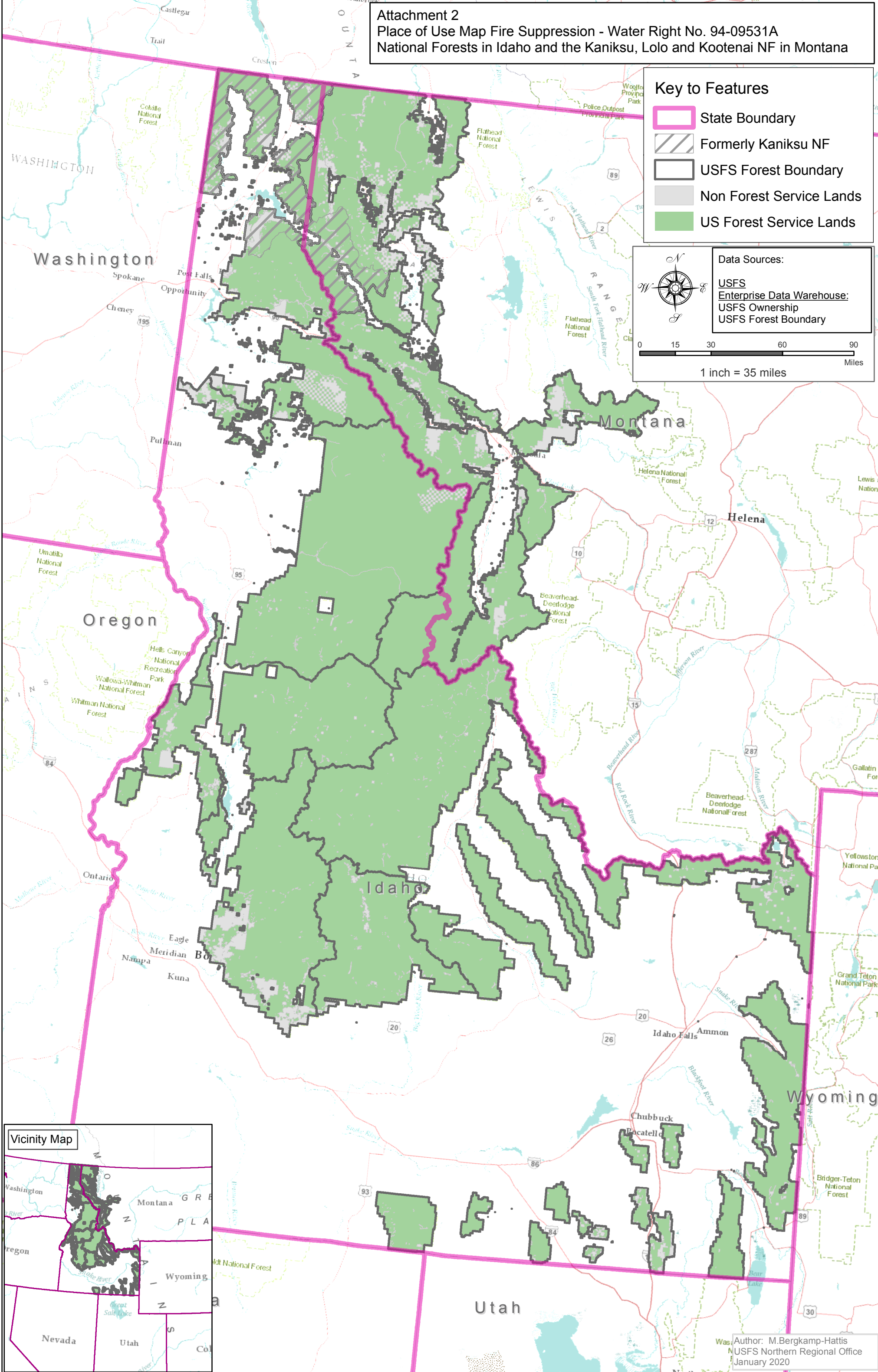
-  State Boundary
-  Formerly Kaniksu NF
-  USFS Forest Boundary
-  Non Forest Service Lands
-  US Forest Service Lands

Data Sources:

- USFS
- Enterprise Data Warehouse:
- USFS Ownership
- USFS Forest Boundary



0 15 30 60 90 Miles  
 1 inch = 35 miles



Author: M. Bergkamp-Hattis  
 USFS Northern Regional Office  
 January 2020